

RCI 130S Research Plot Sampler

- **Compatible With Any John Deere Self-Propelled or Pull-Type Forage Harvester**
- **Integrated Blower System for Discharge Into Wagon or for Distributed Discharge Over Ground**
- **Fast-Acting System for Reduced Plot Harvesting Time**



KEEP MOVING FORWARD



The Complete Research Plot Sampling Solution

The 130S Research Plot Sampler is used to harvest test plots of corn silage, sorghum, alfalfa, grass, switch grass, or other forages and/or biomass crops. The unit can be attached to either a John Deere Pull-Type or Self-Propelled Forage Harvester. The sampler can also be used with an NIR sensor to gather moisture, starch content, protein, other constituents, weight, sample weight, and location settings on a tablet PC in the cab of the power unit. The 130S also integrates a blower unit to the design to deliver the material to a wagon or to spread out the material over a larger area on the ground. This makes the 130S the complete answer to your research plot handling needs.

Crop from the Forage Harvester enters the upper hopper while harvesting. Once the plot material is weighed, the upper hopper drops the material into the lower portion of the unit. The operator gathers a sub-sample from a cross auger and places it in a sampling package for collection. The sub-sample is stored behind the seat. The crop is simultaneously fed into a blower system and delivered through a secondary spout to a wagon or can be spread on the ground.

130S Research Plot Sampler Highlights

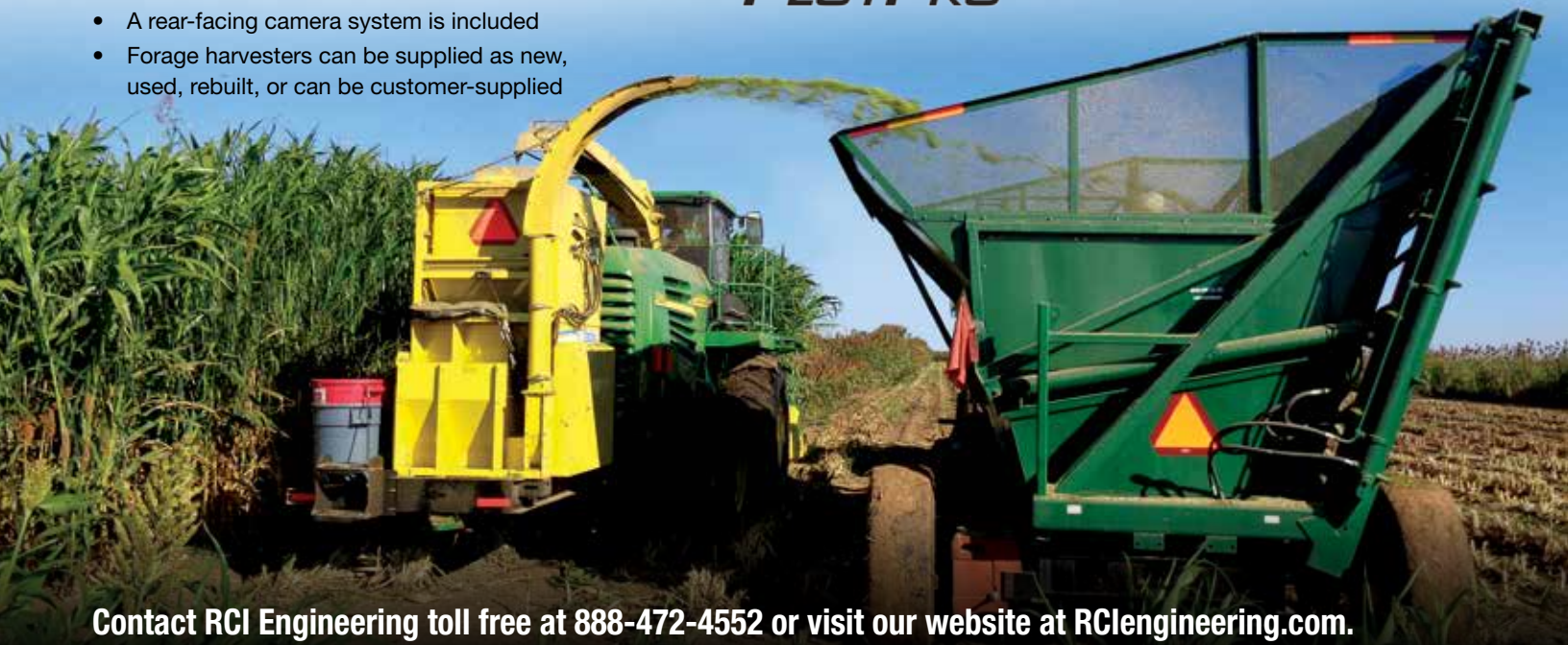
- Upper hopper capacity approximately 30 cu. feet or 500 lbs. of material
- Sampling system volume of approximately 2-10 lbs. of material
- Operator station for efficient collection of data
- Harvesting unit can be fitted with a windrow pickup or chain header for various crops and conditions
- The tablet PC is removable from the machine for use in off-season data gathering
- System is controlled with the RCI PlotPro control system
- An optional GPS tracking system is available
- A rear-facing camera system is included
- Forage harvesters can be supplied as new, used, rebuilt, or can be customer-supplied



The RCI 130S Research Plot Sampler mounted to a John Deere 7300 Series Self-Propelled Forage Harvester



The RCI 130S Research Plot Sampler mounted to a John Deere 5400 Series Self-Propelled Forage Harvester



Contact RCI Engineering toll free at 888-472-4552 or visit our website at RCIengineering.com.

RCI Engineering reserves the right to make changes in design or appearance without incurring any obligations related to those changes. Images shown may not be representative of final production unit.



208 River Knoll Drive
Mayville, WI 53050
Phone: 888-472-4552
Fax: 920-387-9806

See us on
Facebook,
Linked In,
Twitter and
You Tube

