

# Research Plot Harvesters



# Background of RCI

- Business Created in March, 2004
- New Facility – January 2008 (Mayville, WI)
- Warehouse Addition – Winter 2013/2014
- Newer/Larger facility - 2015
- Allied Supplier to John Deere for Attachments for Hay and Forage Equipment
- Short line manufacturer of hay mergers, plot harvesters, bagging equipment (Ag-Bag by RCI)



# RCI Plot Harvesters

- Since 2007, RCI has been involved in the plot harvester business through:
  - Existing plot harvester modifications / specialization
  - Specialty harvesting machine development
  - Hay, Forage, and Biomass Plot Harvester Development and Manufacturing



# RCI Plot Harvester Products

## 1. Plot Samplers

- Added to existing forage harvester
- Allows for data and sample collection
  - NIR Data
  - Weights
  - Sub sample for lab

## 2. Plot Harvesters

- Smaller units for smaller plots





# Plot Samplers

- 130S Plot Sampler



# Plot Samplers – cont.

- 130S Plot Sampler
  - RCI will adapt to any of the following John Deere machines
    - 5000 - 8000 Series Self-Propelled Forage Harvester
    - Tractor-Mounted Units





# 130S Sampler



# Plot Sampler

- RCI specializes in turn-key plot harvesters that include the following:
  - Full rebuild of Forage Harvester
  - Installation of Plot Sampler
  - Calibration of Sampler
  - Calibration of NIR Unit
  - Configuration for Field Operation
  - Annual support and inspection plans





- 
- The image shows a tablet screen with the RCI PlotPro application. The interface is designed for monitoring and controlling a system, likely related to water treatment or environmental monitoring. The top navigation bar includes 'HOME', 'MAP', and 'SETTINGS'. The main display area is titled 'Harvest in Progress' and features a line graph showing 'NRT' (North River Temperature) over time. The graph has a y-axis ranging from 40 to 60 and an x-axis showing dates from 10/18 to 10/24. A red bar at the bottom of the graph indicates a period of high temperature. Below the graph, there are status indicators for 'Run Time' (18:00) and 'Summary Time' (2:40). At the bottom of the screen, a red 'STOP' button is visible. The tablet is placed on a dark surface, and the background shows some physical buttons and a camera lens.

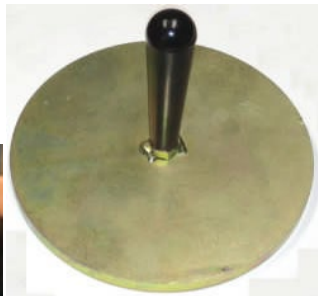
# Plot Sampler Options

- NIR Technology
  - RCI can adapt the John Deere HarvestLab or Zeiss Corona / Corona Extreme NIR unit to any plot harvester as desired by customer.
  - RCI has proprietary software to communicate with the NIR
  - RCI also offers data services for custom curves, calibration of units, and other support



# Plot Sampler Options

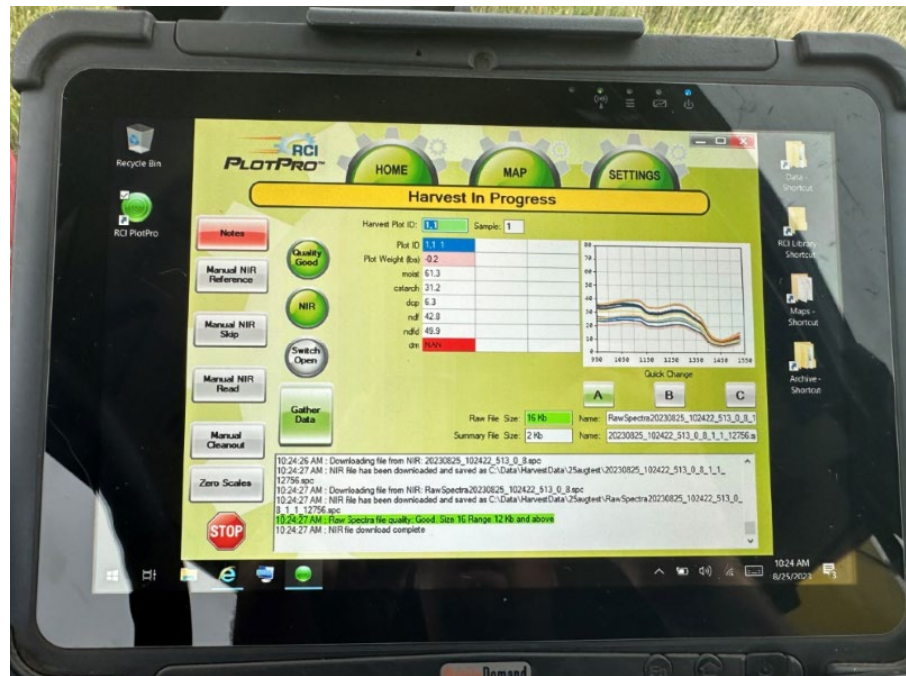
- Stationary / Laboratory NIR Bundle
  - Complete with RCI NIR Case, Software, Dish, Tamper
  - Allows NIR to be used for desktop applications throughout the year





# PlotPro by RCI

- Control System for Research Plot Harvesters
  - Data Gathering
    - NIR Data
    - Weights
    - GPS (optional)
  - Simple System
  - Import maps
  - Export Data
  - Sampler control and data collection in one

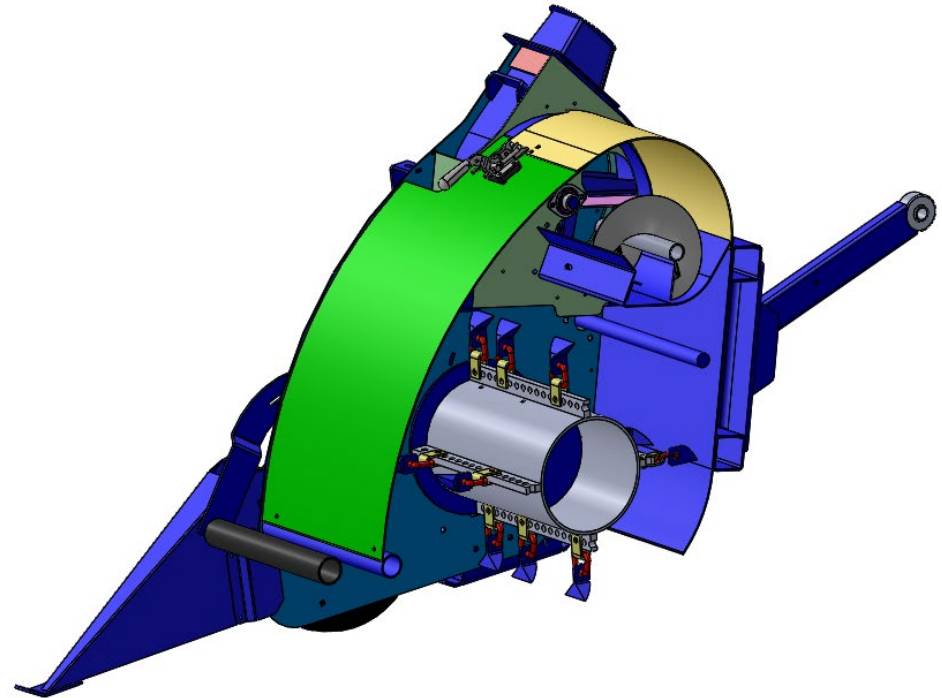
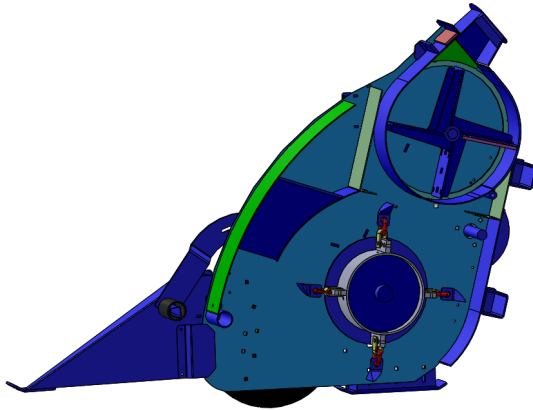


# RCI Research Plot Harvesters

- For research plots of Hay, Forage, and Biomass
  - General Options
    - Width
      - 36" or 48"
      - 36A or 48A
    - Power Unit
      - John Deere Front Mower
        - » 1585 – Cab with a/c and heat
        - » 1580 – Open Station with Rops and Canopy
    - Bagging or Rear Hopper Collection
    - Data Collection
      - Standard Scale
      - PlotPro

# Plot Harvesters - Header

- Header Function
  - Flail Cut
  - Cross Auger
  - Re-cutter Blower





# Plot Harvesters - Samplers

- Sample Hopper Options
  - Bagging
  - Rear Hopper Attachment



# Plot Harvesters - Bagging

- Bagging kit attaches to Harvesting unit





# Plot Harvesters

## Rear Hopper Collection

- Small Hopper (15 cu. Ft.)
  - Dumps to larger Hopper
    - (42 cu. ft.)





# Plot Harvesters

- 36A/48A Front Mower Mounted Plot Harvester
  - John Deere 1585 – cab unit with a/c and heat
  - John Deere 1580 – open station



# 1585 Terrain Cut with 36A/48A



# For More Information:

## Contact Us

### How to Contact RCI Engineering LLC:

Phone: 920-387-9804  
Toll Free: 888-472-4552  
Fax: 920-387-9806  
[info@RCIengineering.com](mailto:info@RCIengineering.com)

### Hours of Operation:

Monday - Friday 8am - 4:30pm (CST)  
Closed on Public Holidays

### Shipping / Mailing Address

208 River Knoll Drive  
Mayville, WI 53050

### After Hours Support:

Phone: 866-706-6559

